

safe · timeless · beautiful



## ***markilux syncra***

A pleasant and inviting atmosphere in the open air  
Protection from the sun and the vagaries of the weather for large areas



## **markilux syncra**

A pleasant and inviting atmosphere in the open air  
Protection from the sun and the vagaries of the weather for large areas

### **The advantages in a nutshell:**

- markilux syncra fix: awning stand system made of steel for two awnings with two posts or with one post and a beam connected to a wall (with a footplate to be screwed down)
- markilux syncra flex: awning stand system made of steel - free-standing - for two folding-arm awnings to be weighted down on site with kerb stones (not included with the delivery)
- Coupled units are possible in the case of the markilux syncra fix
- Protection from sun and rain - with guaranteed water drainage
- in the open air but protected all the same
- guests extend their stay
- prolong the al fresco season
- a post-free area under the awning
- manual and motorised operation
- independent use of each awning
- simple fixture - free-standing or fixed to a concrete base

### **Design:**

- sturdy awning stand system made of steel, puristic in style
- delicate looking square support posts even in the case of smaller awnings
- the unobtrusive appearance of the markilux syncra ensures that it complements the shapes of the most diverse markilux awning models

### **Standard specification:**

- awning model and colour from the markilux range
- stand powder-coated in the awning frame colour for two folding-arm awnings
- delivery includes the top coverboard and end cheeks
- supplied as standard with gearbox and stainless steel winding handle
- awning cover made from perla FR, waterproof and highly flame retardant
- on request other fabrics from the markilux collection are available at no extra cost
- the cover panels are bonded together ultrasonically
- for the technical specification as well as the optional awning accessories please consult the Patio and Balcony Awning Manual

### **Optional accessories (surcharge according to the pricelist)**

- polyester powder coating in all other RAL colours is available to individual order (prices on request, longer lead time)
- awnings with three arms or with an extension of 4000 mm will only be supplied with a motor
- markilux 6000, 5010, 1500, 1550, 1600, pavilion 2 and 990 in the Lounge version
- for individual awning model descriptions as well as optional accessories and bespoke options please consult the current markilux Patio and Balcony Awning Manual or the pricelist (awning dimensions which are excluded from the following dimension matrix on request)

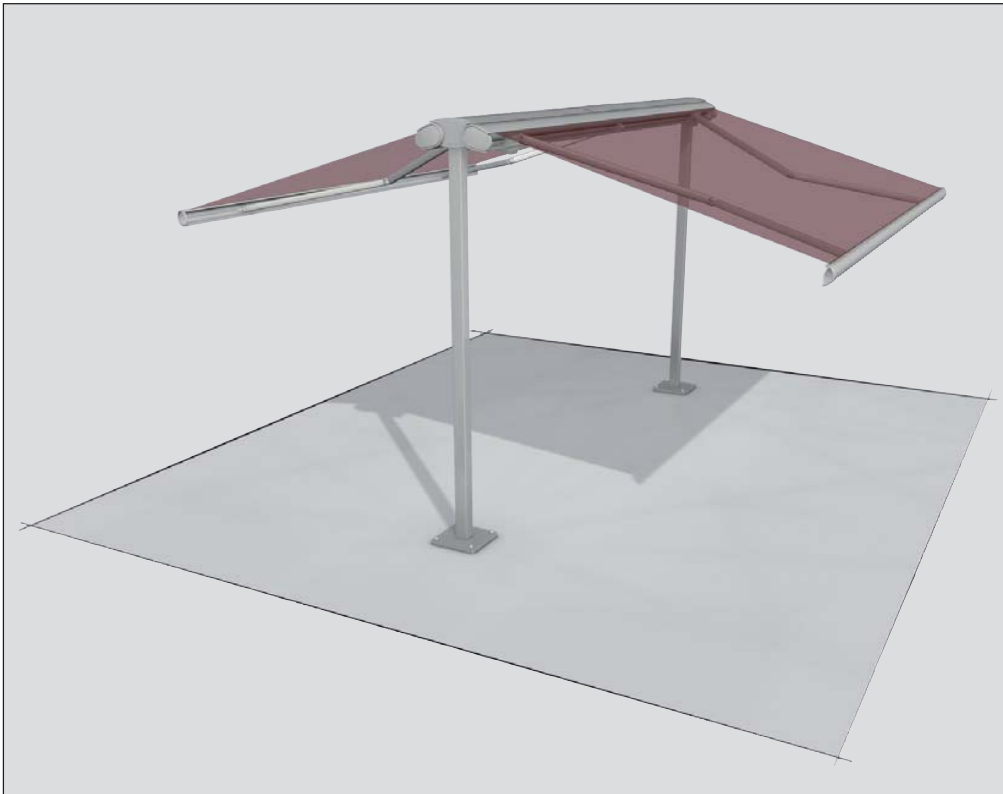


illustration of the syncra fix



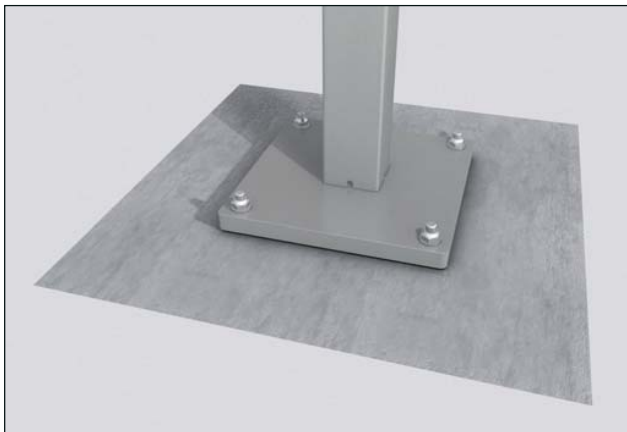
markilux 6000



markilux 5010



markilux 3300/3300 pur



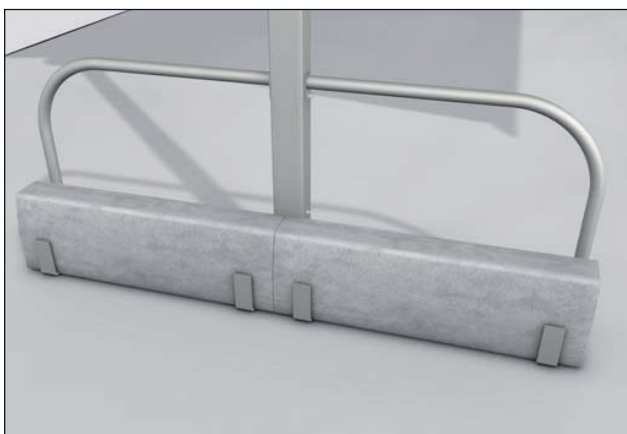
syncra fix: awning stand with footplate to be bolted down



markilux 990



markilux 1200



syncra flex: awning stand to be weighted down on site using kerb stones

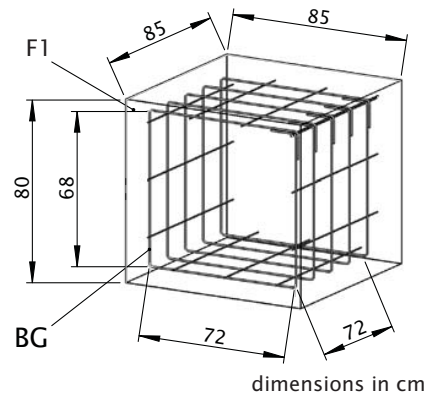
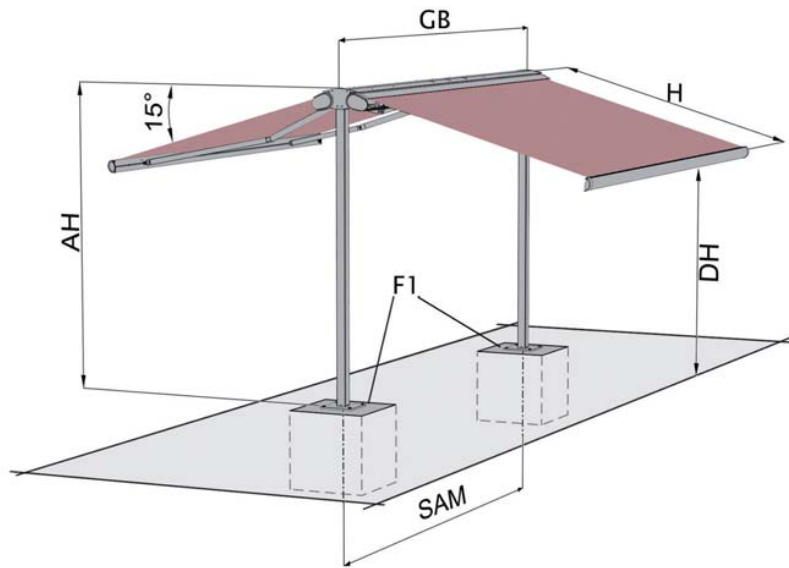


markilux 1500/1550  
markilux 1600/pavilion 2

## markilux syncra fix

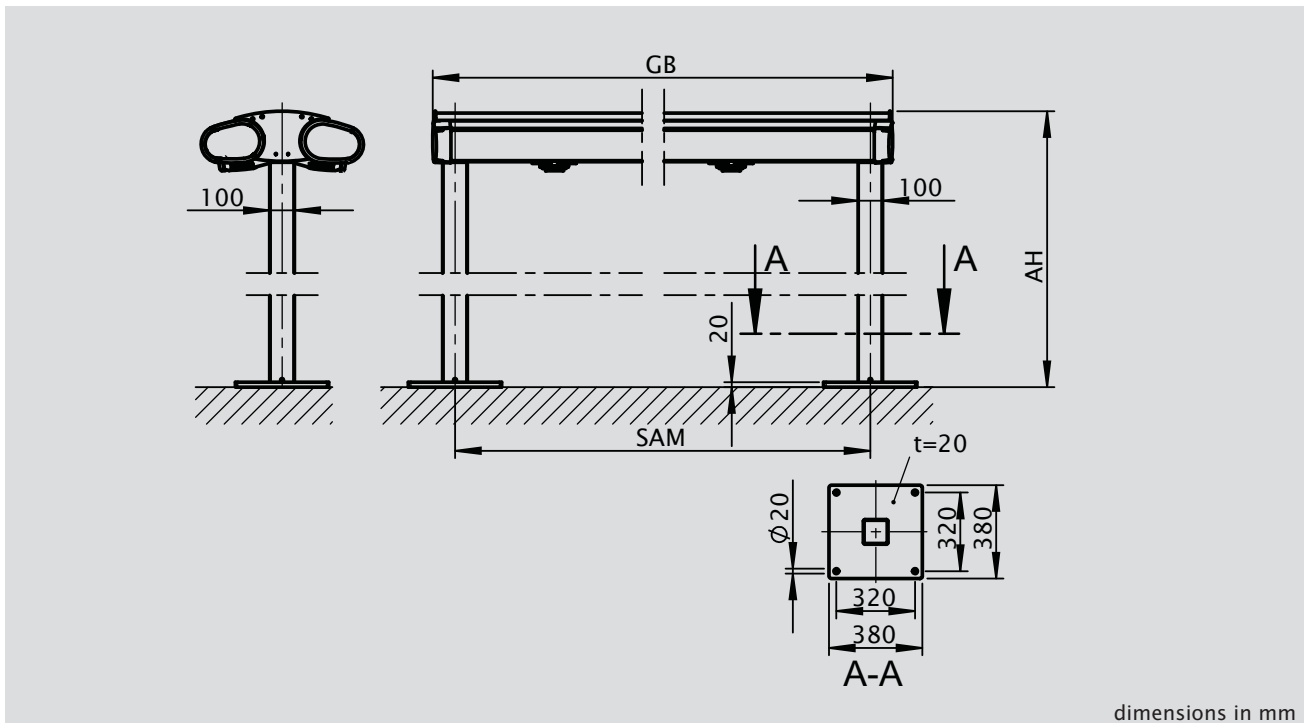
### awning stand for two folding-arm awnings with two posts

dimensions vary according to the awning model - see the pages following



if the position of the central post (SAM) is altered on site the following applies:  
min. SAM = awning width - 15 %

- GB = overall width of the unit
- H = extension
- AH = unit height
- DH = headroom
- SAM = centre to centre post dimension
- F1 = outermost concrete base with armour matting
- FU = concrete base
- BG = armour matting
- t = thickness of the footplate

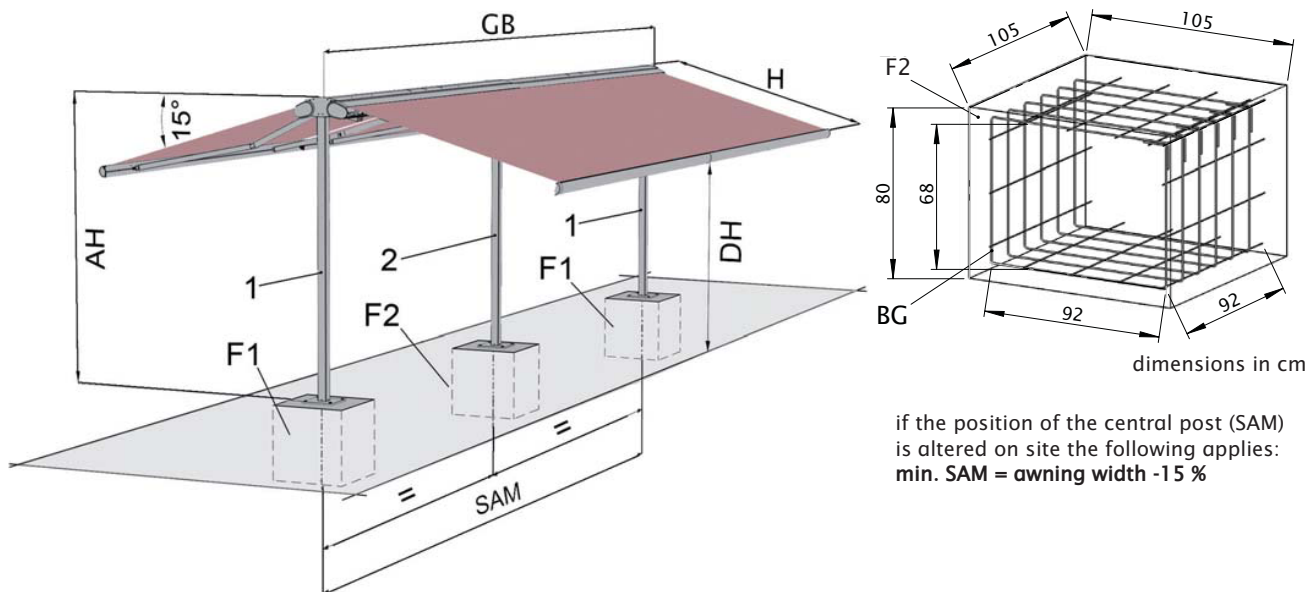


made according to technical drawing, every post has to be supported on site by:

- concrete bases of armoured concrete with a compressive strength of C20/25 (previously known as B25) using armour matting R188
- secure the footplate using Fischer expansion bolts FAZ II 12/30 made of marine grade stainless steel and a washer compliant with DIN 9021 (or equivalent)

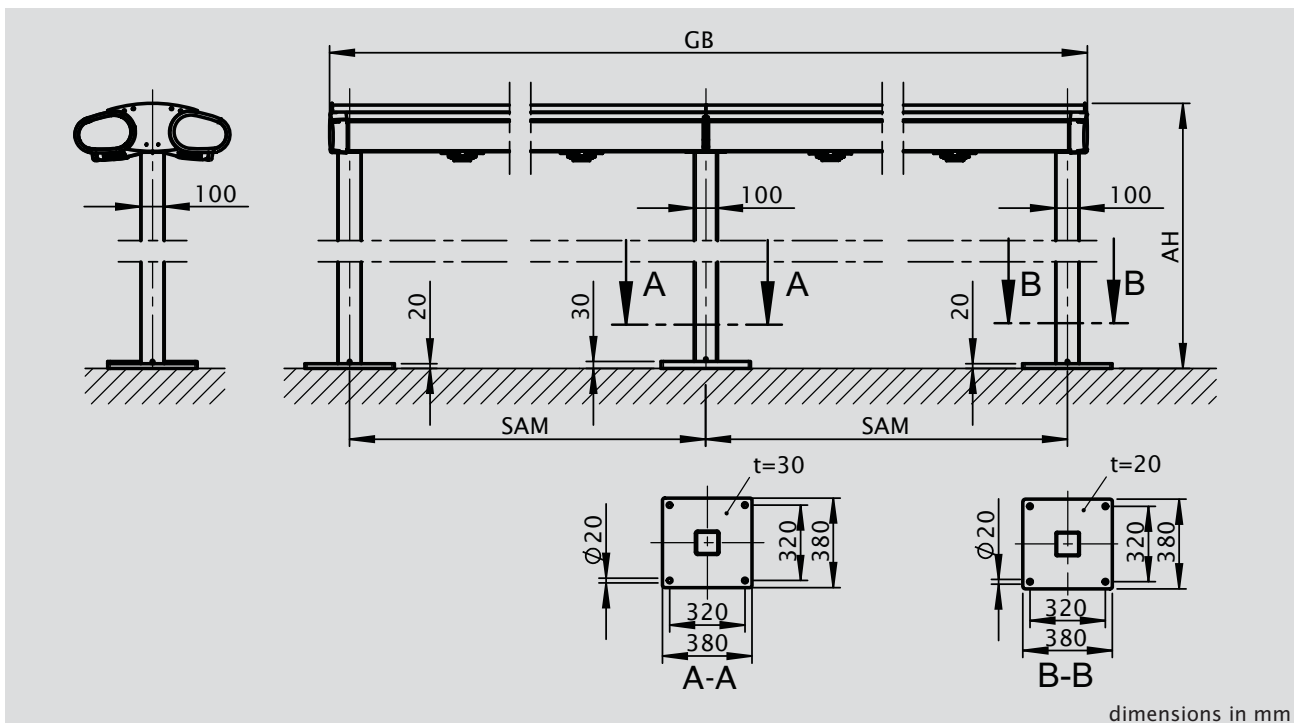
**coupled units**

dimensions vary according to the awning model - see the pages following



GB = overall width of the unit  
H = extension  
AH = unit height  
DH = headroom  
SAM = centre to centre post dimension  
1 = end post  
2 = central post

F1 = end concrete base (v. F1 single unit)  
F2 = central concrete base with armour matting  
BG = armour matting  
t = thickness of the footplate



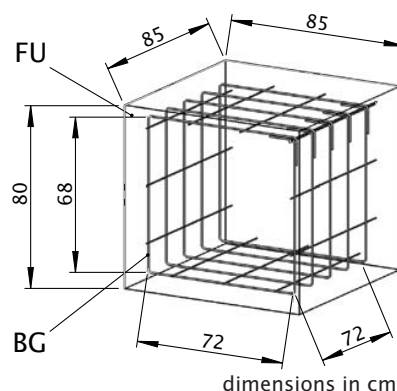
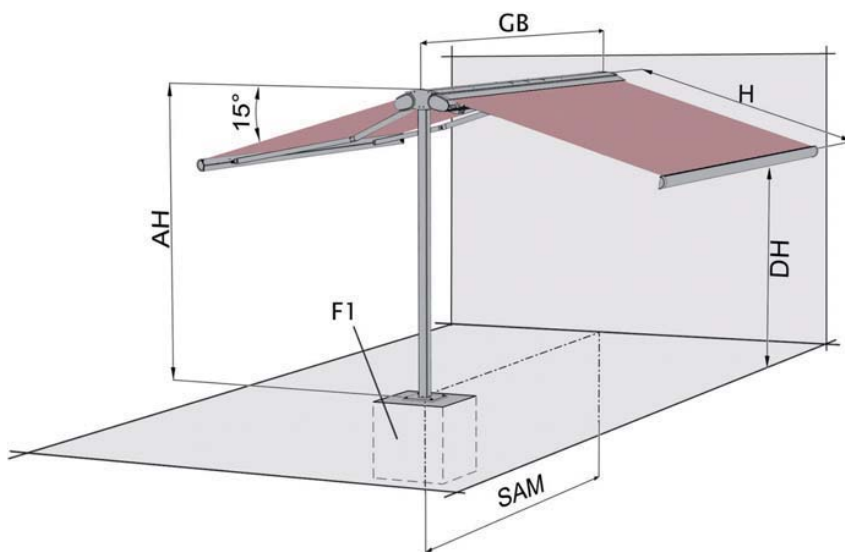
**made on site according to technical drawing:**

- concrete bases of armoured concrete with a compressive strength of C20/25 (previously known as B25) for the outermost posts (F1) using armour matting R188
- concrete bases of armoured concrete with a compressive strength of C20/25 (previously known as B25) for the central post (F2) using armour matting R188
- secure the footplate using Fischer expansion bolts FAZ II 16/50 made of marine grade stainless steel and a washer compliant with DIN 9021 (or equivalent)

## markilux syncra fix

### awning stand for two folding-arm awnings with one post and a connecting beam to the wall

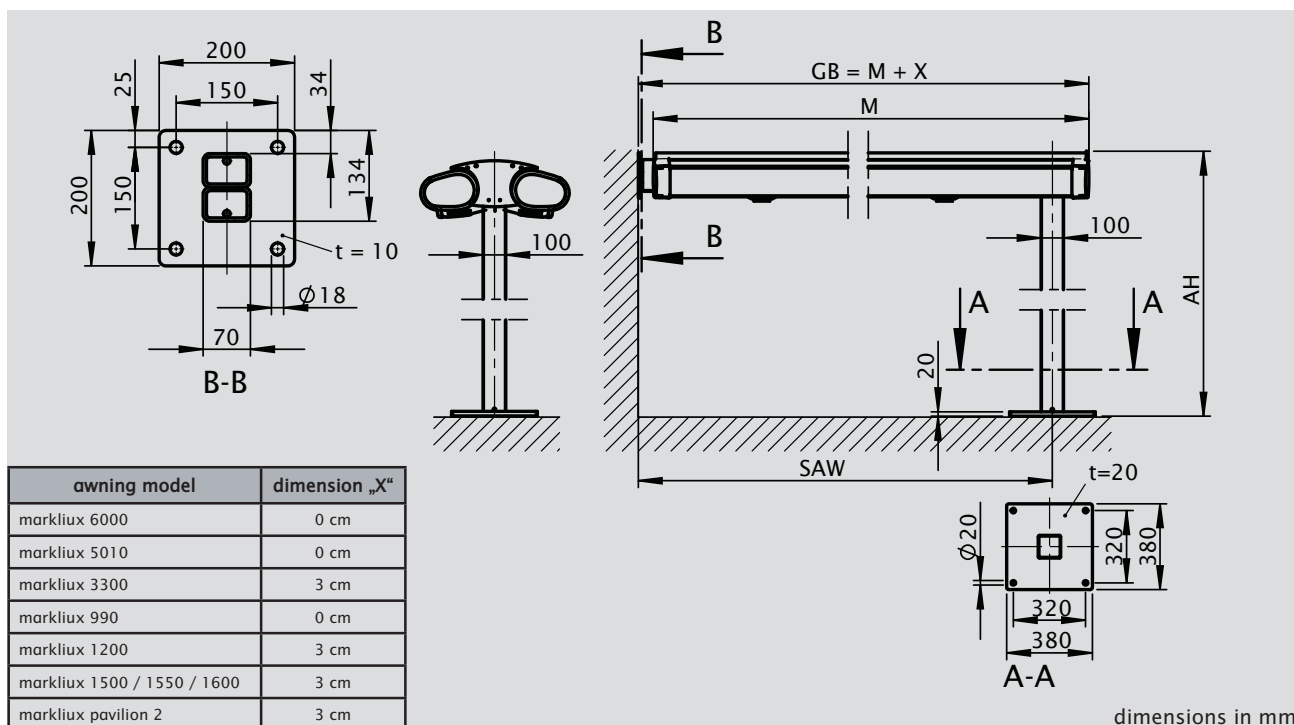
dimensions vary according to the awning model - see the pages following



dimensions in cm  
if the position of the central post (SAM) is altered on site the following applies:  
min. SAM = awning width -15 %

GB = overall width of the unit  
M = awning width  
H = extension  
AH = unit height  
SAM = centre to centre post dimension  
SAW = distance from post centre to edge of concrete base

X = distance from end of the awning to edge of concrete base  
F1 = outermost concrete base with armour matting  
FU = concrete base  
BG = armour matting  
t = thickness of the footplate



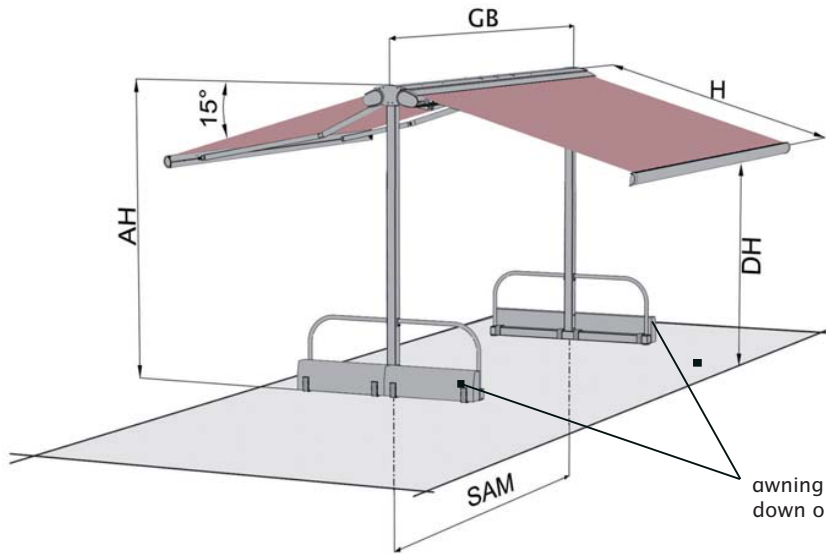
dimensions in mm

made according to technical drawing, every post has to be supported on site by:

- concrete base of armoured concrete with a compressive strength of C20/25 (previously known as B25) using armour matting R188
- secure the footplate using Fischer expansion bolts FAZ II 12/30 made of marine grade stainless steel and a washer compliant with DIN 9021 (or equivalent)

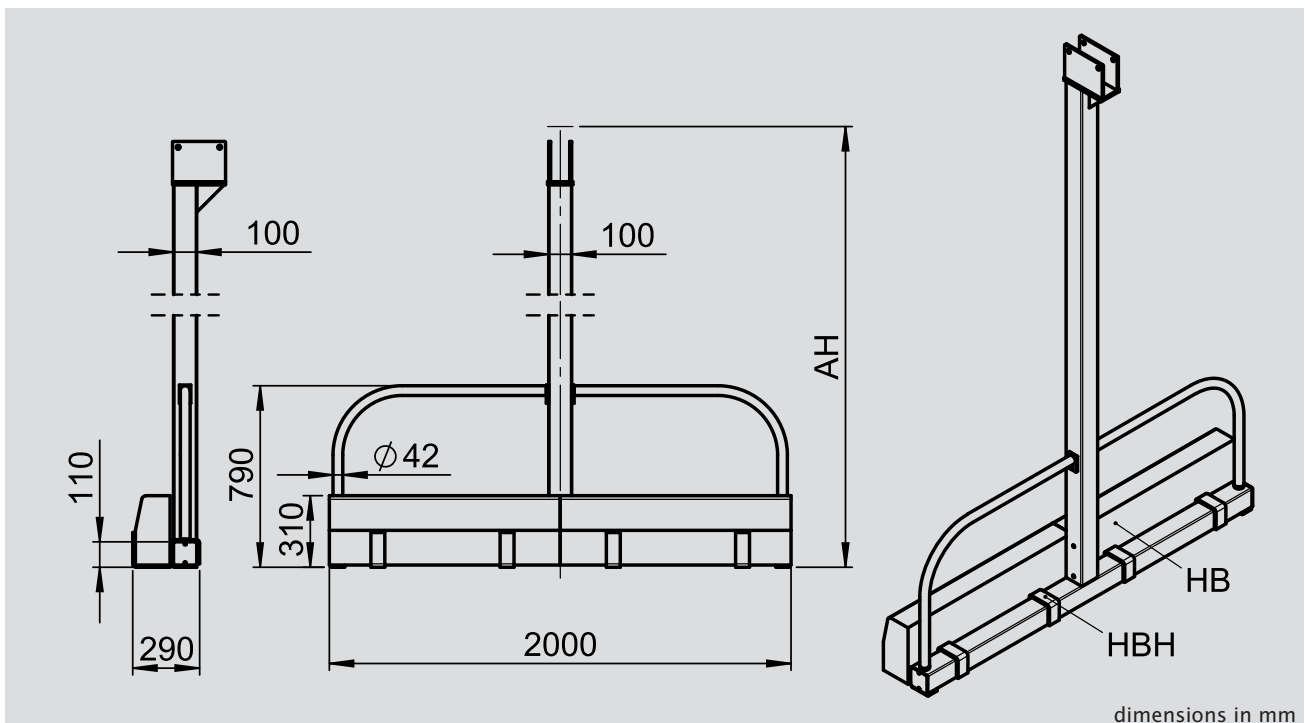
**awning stand system made - free-standing -  
for two folding-arm awnings with two support posts**

dimensions vary according to the awning model - see the pages following



awning stand - free-standing - to be weighted down on site using kerb stones

- GB = overall width of the unit
- SAM = centre to centre post dimension
- H = extension
- AH = unit height
- HB = kerb stone
- HBH = kerb stone retainer



dimensions in mm


made according to technical drawing, every post has to be supported on site by:

- per side two kerb stones compliant with DIN 483, shape A, A4, width 15 cm, height 30 cm, length 100 cm (weight 100 kg/pc) to weigh down the s-shaped kerb retainers

## syncra with markilux 6000



Post separation = awning width - 18 cm  
 Overall width = awning width

frame colours		
	RAL 9016 traffic white (Club)	•
	RAL 9006 metallic aluminium RAL (Studio)	◦
	5204 nano-anthracite metallic (Lounge)	◦
	5215 nano stone grey metallic (Lounge)	◦
	5233 nano off-white textured finish (Lounge)	◦
	non-standard RAL colour	◦

• = fitted as standard  
 ◦ = optional accessory

### markilux syncra fix

projection	awning width								head-room	unit height
	301-350	351-400	401-450	451-500	501-550	551-600	601-650	651-700		
200	1)								271	322
250	2)								257	
300		3)						7)	244	
350			4)				6)	8)	230	
400				5)				9)	217	

dimensions in cm

Coupled units are possible

- only available with indented posts on request; please note the minimum widths!

- 1) min. awning width 305
- 2) min. awning width 332
- 3) min. awning width 382
- 4) min. awning width 432
- 5) min. awning width 482
- 6) min. awning width 650
- 7) min. awning width 655
- 8) min. awning width 665
- 9) min. awning width 700

- = available, 2 folding arms
- = available, 3 folding arms

### markilux syncra flex

projection	awning width					head-room	unit height
	251-300	301-350	351-400	401-450	451-500		
200	■ 10)	11)	13)	15)		245	296
250		■ 12)	13)	15)	16)	231	
300			■ 14)	15)	16)	218	

dimensions in cm

- only available with indented posts on request; please note the minimum widths!

- 10) min. awning width 278
- 11) min. awning width 331
- 12) min. awning width 328
- 13) min. awning width 371
- 14) min. awning width 378
- 15) min. awning width 411
- 16) min. awning width 461

- = available, 2 folding arms





Post separation = awning width - 20 cm  
 Overall width = awning width

frame colours		
	RAL 9016 traffic white	•
	RAL 8019 grey brown	•
	RAL 9006 metallic aluminium	•
	RAL 1015 light ivory	•
	5204 nano-anthracite metallic (Lounge)	○
	5215 nano stone grey metallic (Lounge)	○
	5233 nano off-white textured finish (Lounge)	○
	non-standard RAL colour	○

• = fitted as standard  
 ○ = optional accessory

### markilux syncra fix

projection	awning width									head-room	unit height
	251-300	301-350	351-400	401-450	451-500	501-550	551-600	601-650	651-700		
200	1)	3)								270	320
250	■ 2)	4)								256	
300		■ 5)	6)					▲		243	
350			■ 7)	8)				■ 11)	12)	229	
400				■ 9)	10)				■ 13)	216	

dimensions in cm

Coupled units are possible

- ▲ in the case of a shadeplus with 3 arms; min. awning width 613 cm
- only available with indented posts on request; please note the minimum widths!

- min. awning width 266
- min. awning width 300
- min. awning width 313
- min. awning width 316
- min. awning width 350
- min. awning width 366
- min. awning width 400
- min. awning width 416
- min. awning width 450
- min. awning width 466
- min. awning width 650
- min. awning width 663
- min. awning width 700

= available, 2 folding arms  
 = available, 3 folding arms

### markilux syncra flex

projection	awning width						head-room	unit height
	250	251-300	301-350	351-400	401-450	451-500		
200	■ 14)	15)	16)	18)	20)		247	294
250		■ 2)	17)	18)	20)	21)	233	
300			■ 4)	■ 19)	20)	21)	220	

dimensions in cm

- only available with indented posts on request; please note the minimum widths!


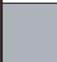
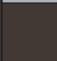

- min. awning width 300
- min. awning width 350
- min. awning width 250
- min. awning width 292
- min. awning width 339
- min. awning width 342
- min. awning width 369
- min. awning width 392
- min. awning width 409
- min. awning width 459

= available, 2 folding arms

## syncra with markilux 3300, 3300 pur



Post separation = awning width - 11 cm  
 Overall width = awning width + 3 cm

frame colours		
	RAL 9016 traffic white	•
	RAL 9006 metallic aluminium	•
	RAL 8019 grey brown	•
	non-standard RAL colour	○

• = fitted as standard  
 ○ = optional accessory



### markilux syncra fix

projection	awning width									head-room	unit height
	251-300	301-350	351-400	401-450	451-500	501-550	551-600	601-650	651-700		
200										273	324
250	1)									259	
300		2)								246	
350			3)	4)				5)	6)	232	

Coupled units are possible

- 1) min. awning width 300
- 2) min. awning width 350
- 3) min. awning width 400
- 4) min. awning width 408
- 5) min. awning width 650
- 6) min. awning width 668

dimensions in cm

 = available, 2 folding arms  
 = available, 3 folding arms

### markilux syncra flex

projection	awning width						head-room	unit height
	200-250	251-300	301-350	351-400	401-450	451-500		
200	■ 7)	8)	9)				247	298
250		■ 1)	10)				233	
300			■ 2)	11)			220	

■ only available with indented posts on request; please note the minimum widths!


dimensions in cm

- 1) min. awning width 300
- 2) min. awning width 350
- 7) min. awning width 250
- 8) min. awning width 275
- 9) min. awning width 305
- 10) min. awning width 320
- 11) min. awning width 370

 = available, 2 folding arms



Post separation = awning width - 48 cm  
 Overall width = awning width

frame colours		
	RAL 9016 traffic white	•
	RAL 8019 grey brown	•
	RAL 9006 metallic aluminium	•
	5204 nano-anthracite metallic (Lounge)	○
	5215 nano stone grey metallic (Lounge)	○
	5233 nano off-white textured finish (Lounge)	○
	non-standard RAL colour	○

• = fitted as standard  
 ○ = optional accessory



### markilux syncra fix

projection	awning width					head-room	unit height
	251-300	301-350	351-400	401-450	451-500		
200						275	321
250	1)					261	
300		2)				248	

Coupled units are not possible

- 1) min. awning width 279  
 2) min. awning width 329

dimensions in cm

 = available, 2 folding arms  
 = available, 3 folding arms

### markilux syncra flex

projection	awning width						head-room	unit height
	190-250	251-300	301-350	351-400	401-450	451-500		
200	3)						244	295
250		1)					230	
300			2)				217	

- 1) min. awning width 279  
 2) min. awning width 329  
 3) min. awning width 229





dimensions in cm

 = available, 2 folding arms

## syncra with markilux 1200



Post separation = awning width - 11 cm  
 Overall width = awning width + 3 cm

frame colours		
	RAL 9016 traffic white	•
	RAL 9006 metallic aluminium	•
	RAL 8019 grey brown	•
	non-standard RAL colour	◦

• = fitted as standard  
 ◦ = optional accessory



### markilux syncra fix

projection	awning width									head-room	unit height
	251-300	301-350	351-400	401-450	451-500	501-550	551-600	601-650	651-700		
200	1)									275	325
250	2)	3)								261	
300		4)	5)							248	
350			6)	7)						235	

Coupled units are possible

- 1) min. awning width 264
- 2) min. awning width 299
- 3) min. awning width 314
- 4) min. awning width 349
- 5) min. awning width 364
- 6) min. awning width 399
- 7) min. awning width 414

dimensions in cm

 = available, 2 folding arms  
 = available, 3 folding arms

### markilux syncra flex

projection	awning width						head-room	unit height
	180-250	251-300	301-350	351-400	401-450	451-500		
200	■ 8)	9)	10)			13)	249	299
250		■ 9)	11)			13)	235	
300			■ 11)	12)		13)	222	

■ only available with indented posts on request; please note the minimum widths!

- 8) min. awning width 240
- 9) min. awning width 290
- 10) min. awning width 320
- 11) min. awning width 340
- 12) min. awning width 390
- 13) min. awning width 460

dimensions in cm

 = available, 2 folding arms

## syncra with markilux 1500 / 1550 / 1600



Post separation = awning width - 11 cm  
 Overall width = awning width + 3 cm

frame colours		
	RAL 9016 traffic white	•
	RAL 8019 grey brown	•
	RAL 9006 metallic aluminium	•
	RAL 1015 light ivory	•
	5204 nano-anthracite metallic (Lounge)	○
	5215 nano stone grey metallic (Lounge)	○
	5233 nano off-white textured finish (Lounge)	○
	non-standard RAL colour	○

• = fitted as standard  
 ○ = optional accessory

### markilux syncra fix

projection	awning width							head-room	unit height	
	261-310	311-360	361-410	411-460	461-510	511-560	561-610			611-660
200	1)								275	326
250	2)	3)							261	
300		4)	5)						248	
350			6)	7)					235	

Coupled units are possible

- 1) min. awning width 264
- 2) min. awning width 304
- 3) min. awning width 314
- 4) min. awning width 354
- 5) min. awning width 364
- 6) min. awning width 404
- 7) min. awning width 419

dimensions in cm

= available, 2 folding arms

### markilux syncra flex

projection	awning width					head-room	unit height
	195-260	261-310	311-360	361-410	411-460		
200	■ 8)	9)	11)			249	300
250		■ 10)	12)			235	
300			■ 13)	14)		222	

■ only available with indented posts on request; please note the minimum widths!

- 8) min. awning width 245
- 9) min. awning width 290
- 10) min. awning width 295
- 11) min. awning width 320
- 12) min. awning width 340
- 13) min. awning width 345
- 14) min. awning width 390

dimensions in cm

= available, 2 folding arms

## syncra with markilux pavilion 2



Post separation = awning width - 11 cm  
 Overall width = awning width + 3 cm

frame colours		
	RAL 9016 traffic white	•
	RAL 8019 grey brown	•
	RAL 9006 metallic aluminium	•
	RAL 1015 light ivory	•
	5204 nano-anthracite metallic (Lounge)	○
	5215 nano stone grey metallic (Lounge)	○
	5233 nano off-white textured finish (Lounge)	○
	non-standard RAL colour	○

• = fitted as standard  
 ○ = optional accessory

### markilux syncra fix

projection	awning width						head-room	unit height
	350-360	361-410	411-460	461-510	511-560	561-610		
250							261	326
300		1)					248	
350			2)				235	

Coupled units are not possible  
 1) min. awning width 400  
 2) min. awning width 450

dimensions in cm

= available, 2 folding arms

### markilux syncra flex

projection	awning width				head-room	unit height
	350-360	361-410	411-460	461-510		
250	3)				235	300
300		1)			222	

1) min. awning width 400  
 3) min. awning width 350

dimensions in cm

= available, 2 folding arms